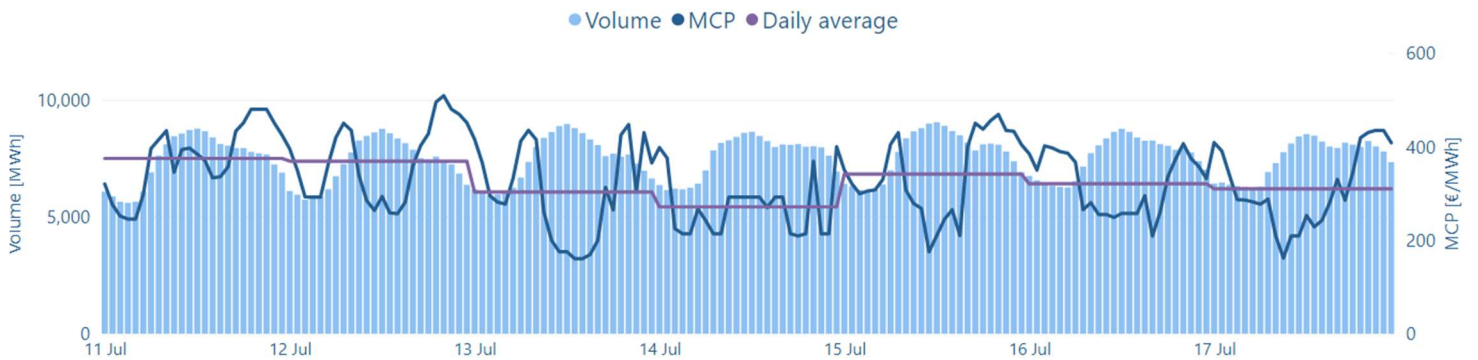


MCP
327.14 €/MWh

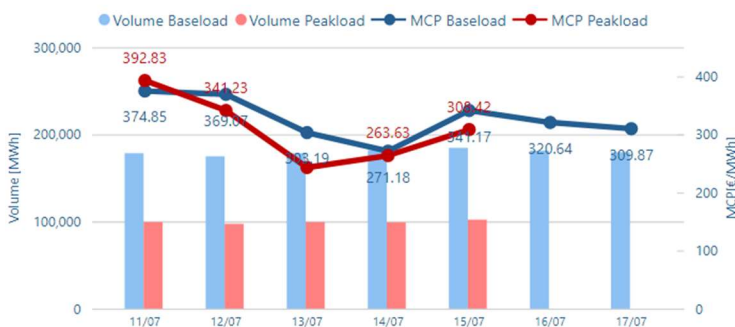
Volume
1,259 GWh

Value
409.2 M€

Hourly MCP & Volume



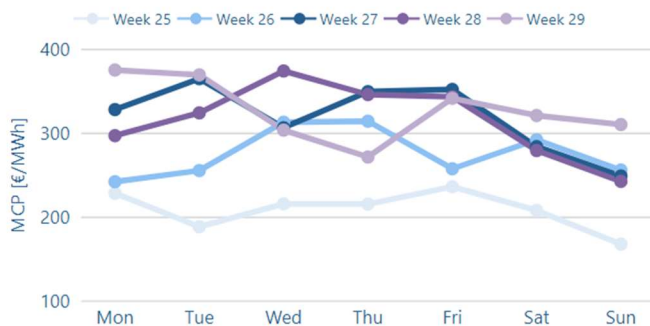
Daily MCP & Volume



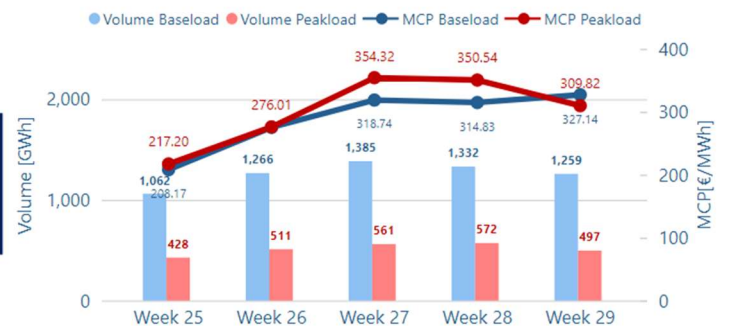
Data table

Delivery Date	MCP BL [€/MWh]	MCP PL [€/MWh]	Volume BL [MWh]	Volume PL [MWh]
11/07	374.85	392.83	178,422	99,477
12/07	369.07	341.23	174,802	97,330
13/07	303.19	243.02	178,434	99,463
14/07	271.18	263.63	181,957	99,043
15/07	341.17	308.42	184,581	102,138
16/07	320.64		181,474	
17/07	309.87		179,668	

MCP per Weekday



Weekly MCP & Volume



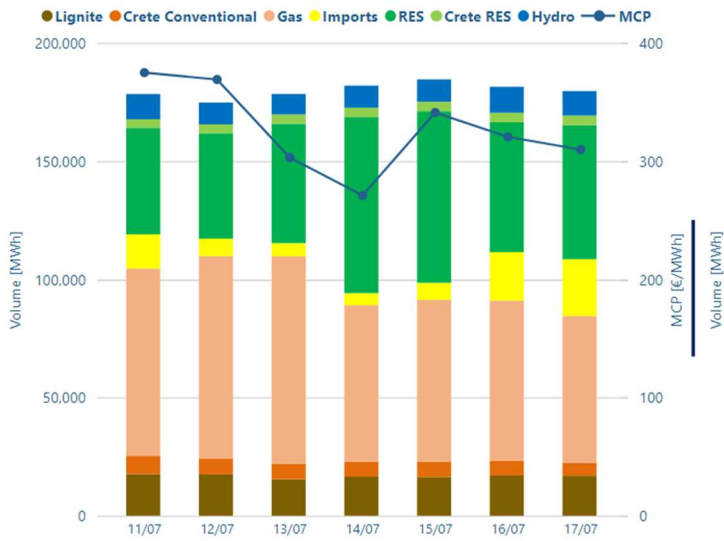
Day Ahead Electricity Market-Greek Bidding Zone

Week 29

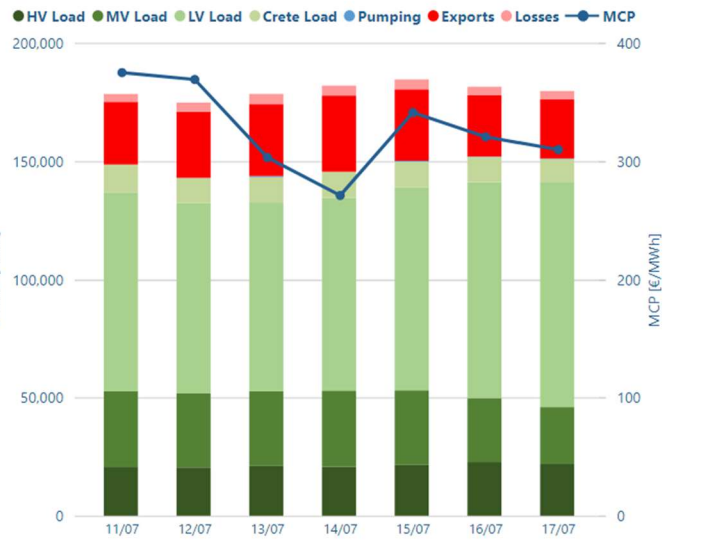
11/07/2022

17/07/2022

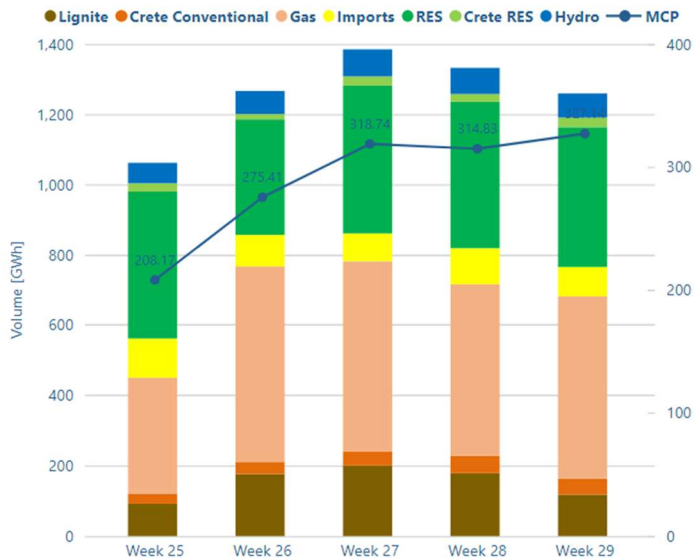
Daily Supply Mix



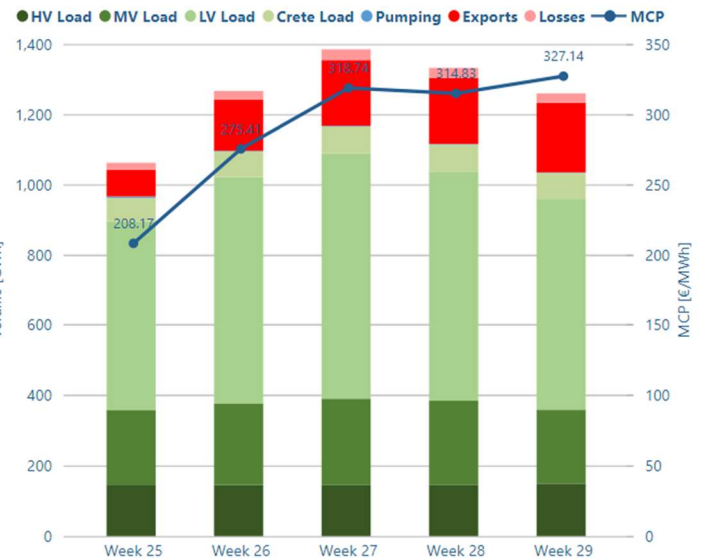
Daily Demand Mix



Weekly Supply Mix



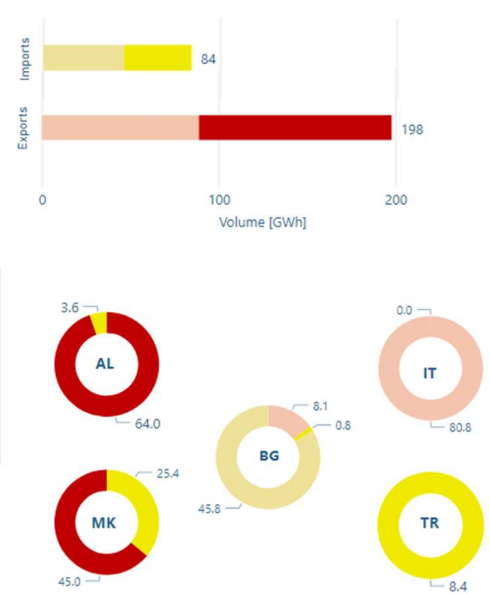
Weekly Demand Mix



Unmatched orders & traded volume



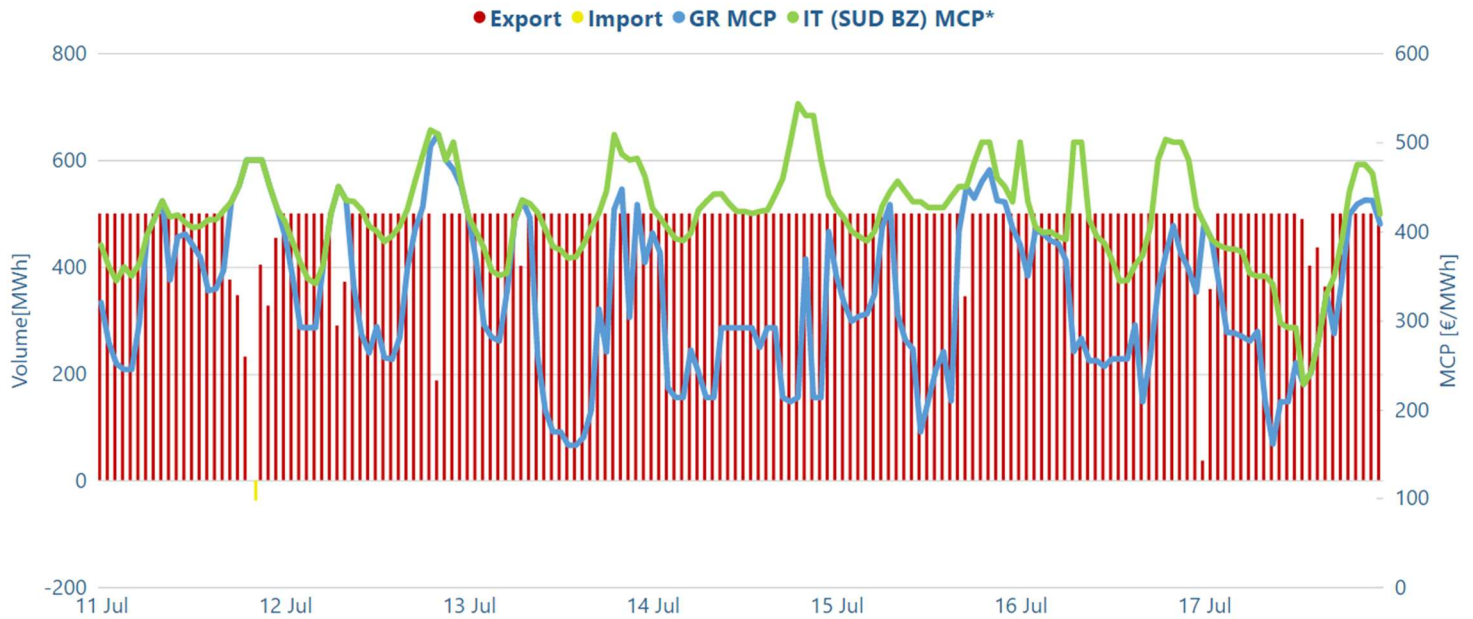
Cross Borders Volumes



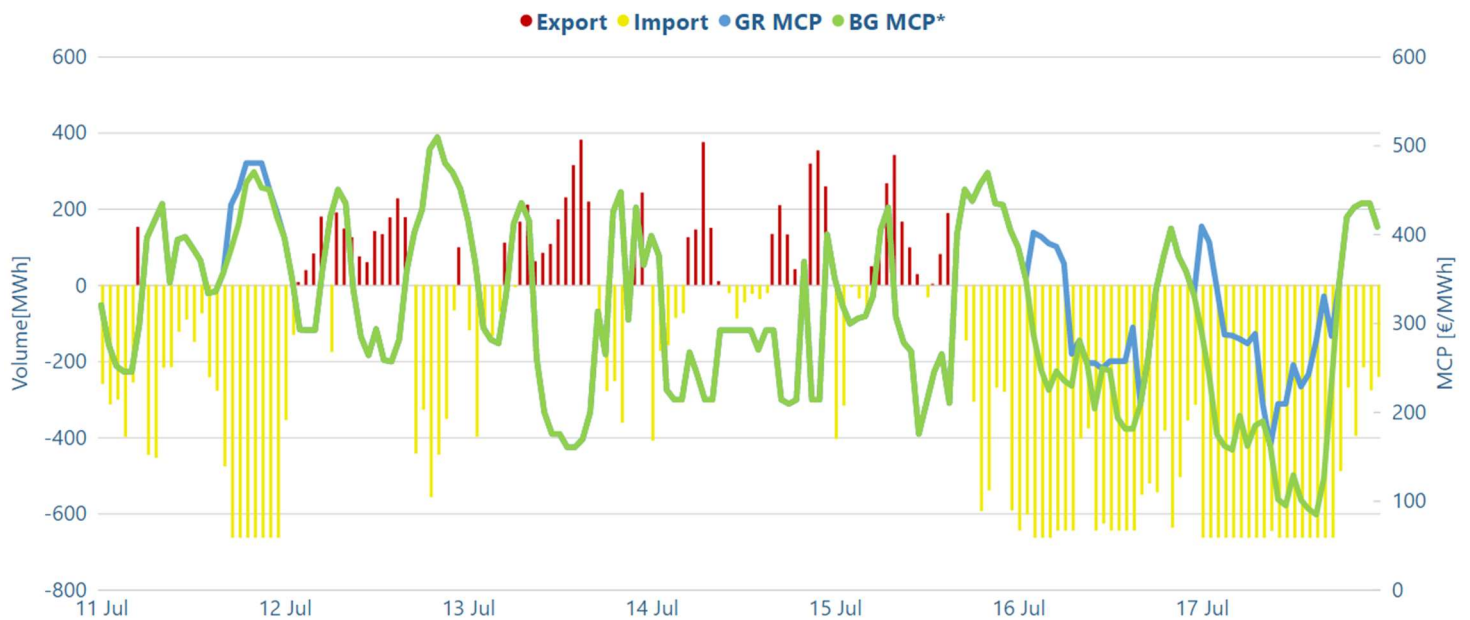
*The unmatched orders include all orders that have not been included in the algorithm (excluding block orders for sell side)

Exports-Implicit Allocation Imports-Implicit Allocation

Market Coupling Cross Border Flow



*Datasource for IT (SUD BZ) MCP: <http://www.mercatoelettrico.org/En/Esiti/MGP/EsitiMGP.aspx>



*Datasource for BG MCP: <https://ibex.bg/markets/dam/dam-market-segment/>

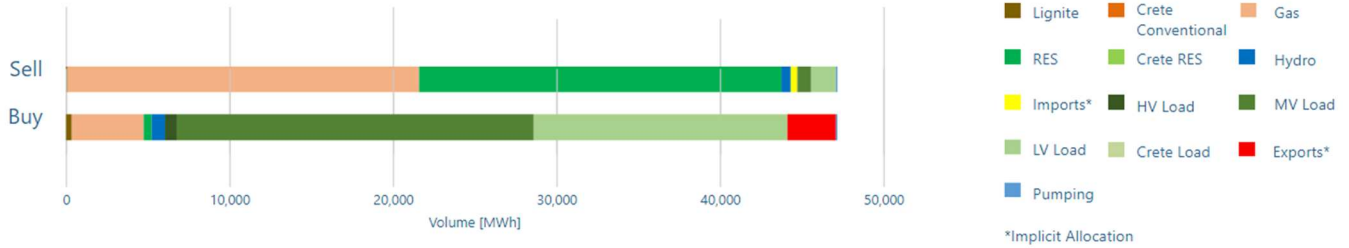
Intraday Electricity Market-Greek Bidding Zone

Week 29

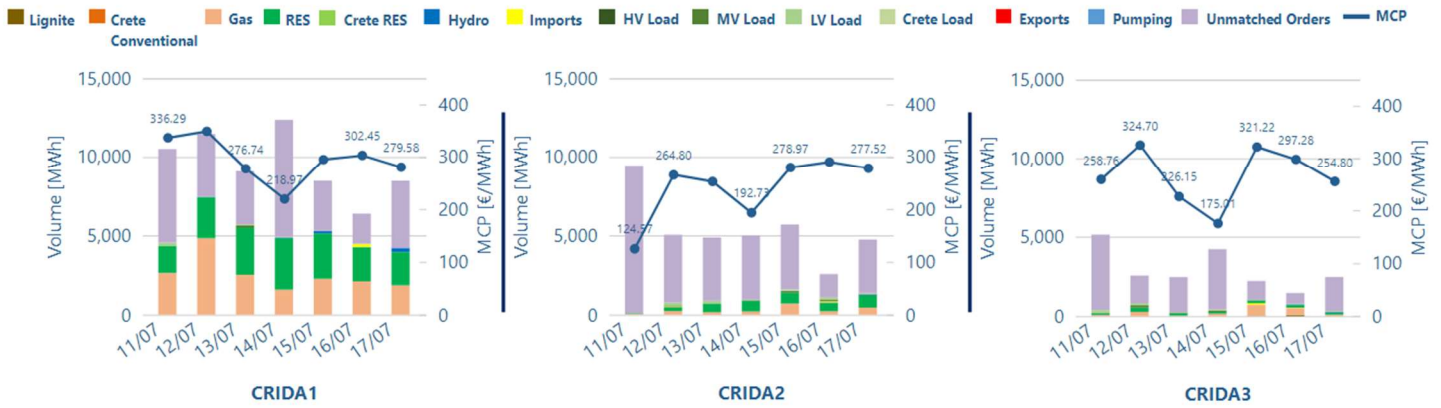
11/07/2022

17/07/2022

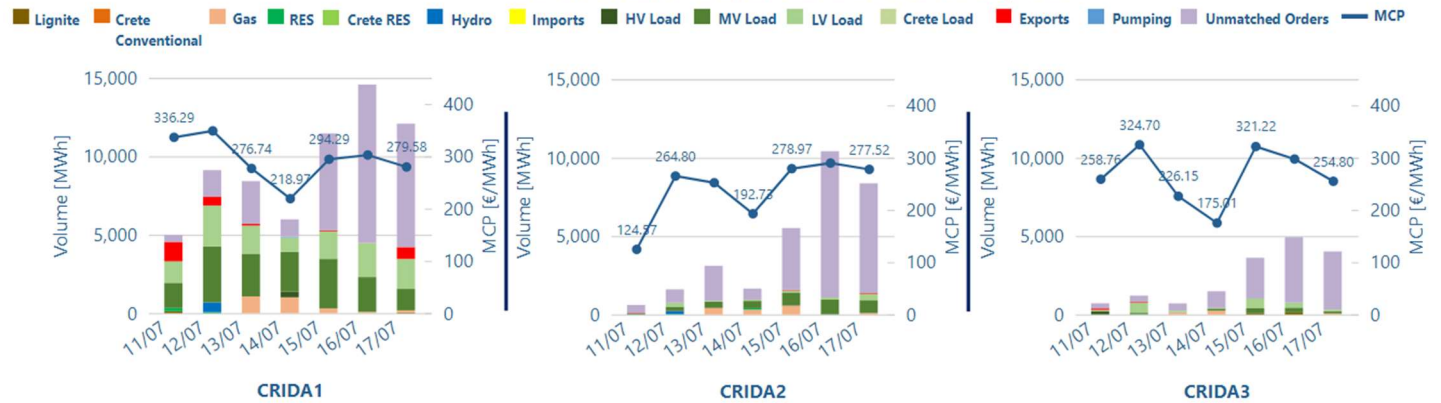
Aggregated traded volume



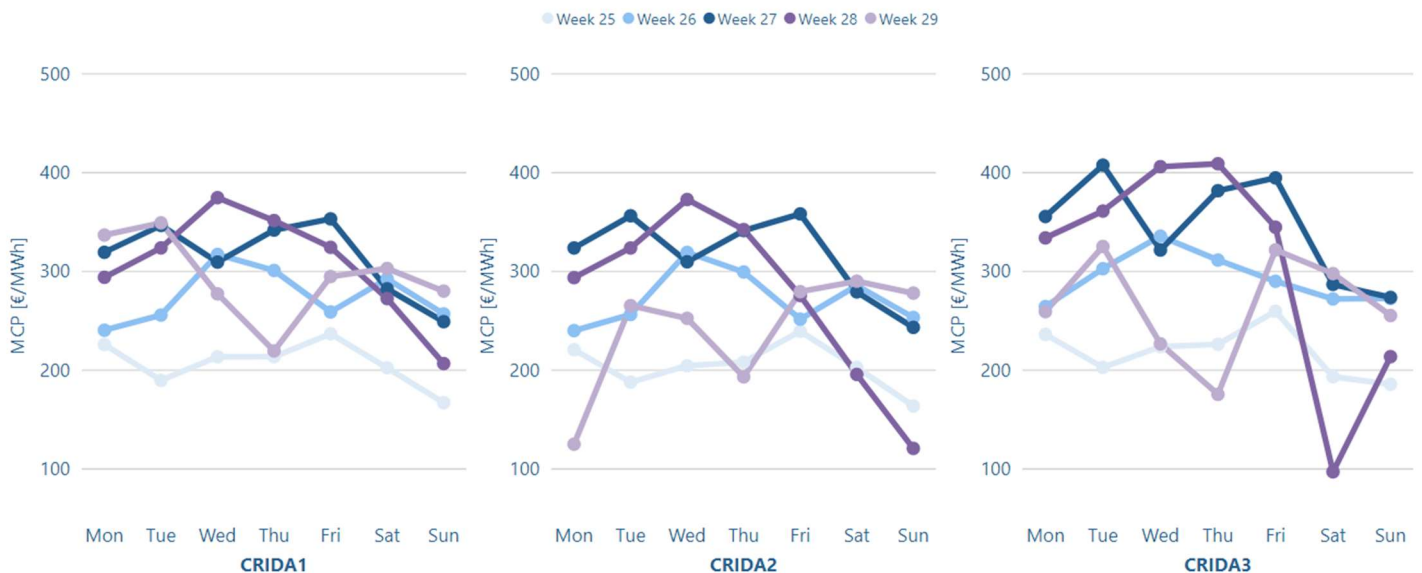
MCP, Volume & unmatched orders for Sell Side

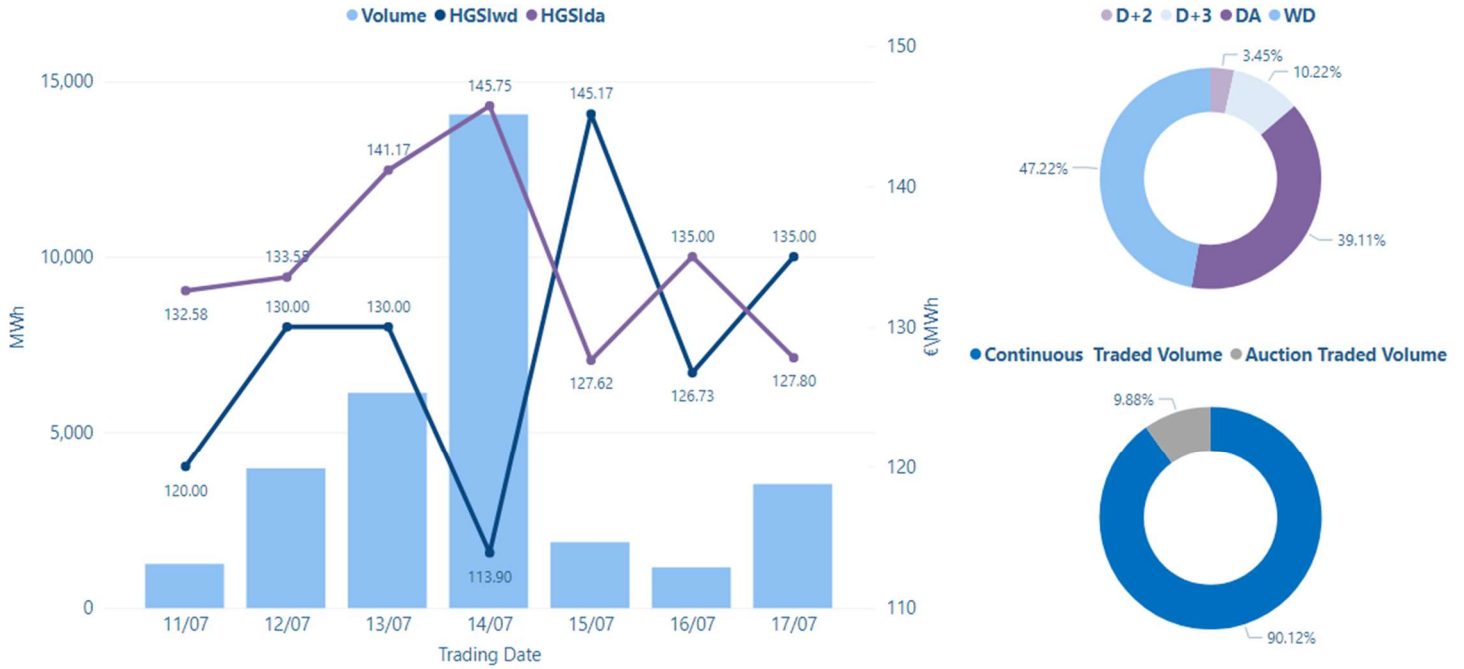


MCP, Volume & unmatched orders for Buy Side



MCP per Weekday





Volume, Closing, Min & Max Prices per Trading Date

